



Baby layette

ALGAE AND BAMBOO COLLECTION



Bath robes



Hooded towels



A wash glove and bibs



Nappies in three sizes



Covers and blankets



OEKO-TEX®
CONFIDENCE IN TEXTILES
STANDARD 100



Soothing effect of ALGAE
on the skin



ECO-FRIENDLY
essential
SAFE TEXTILES FOR YOUR BABY





bamboo line

SAVE THE OCEAN

OUT OF CONCERN FOR THE BABY'S *sensitive skin!*

ECO-FRIENDLY
essential
SAFE TEXTILES FOR YOUR BABY

Health-promoting effects of algae in the **SeaCELL®** algae fibre inspired us to create an **ALGAE COLLECTION OF CHILDREN'S TEXTILES**, responding to the needs of parents whose top priority is the safety of their kids.

The theme of the latest collection is a print with an eco-friendly 'Save the Ocean' message.

A birds-eye view of the ocean water reveals the abundance of the ocean flora and fauna. However, we can lose this beautiful view if we do not change our buying habits.

The Save the Ocean collection includes as many as 18 different care products for newborn babies and children in their early years.

All products include algae fibre and bamboo. We used **SeaCELL®** rich in ocean minerals to create a collection of:

- **Nappies in 3 sizes, with a unique motif of a school of fish;**
- **As many as 3 types of covers and blankets** with elegant ornaments in the form of tassels and decorative bands;
- **6 different bath towels.** Thanks to an innovative weaving method, all bath robes and towels from this collection have one side made of algae, which allows to apply beneficial mineral elements from algae **directly to the baby's skin;**
- 3 supplementary products that enhance the parents relationship with the child during baths and feeding (bibs and a wash glove).



TEXPOL



Baby layette
ALGAE AND BAMBOO COLLECTION

Set 1

1.



4.

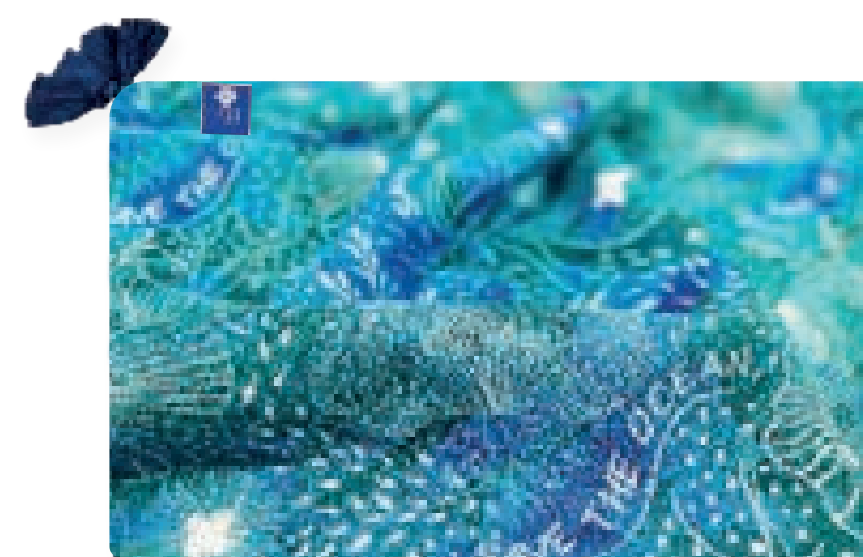


7.



Set of 2 nappies

11.



Muslin blanket and a pareo

14.



15.



Bibs

Set 2

2.



5.



12.



Reusable care wipes

16.



Grain blanket

17.



3D blanket

Set 3

3.



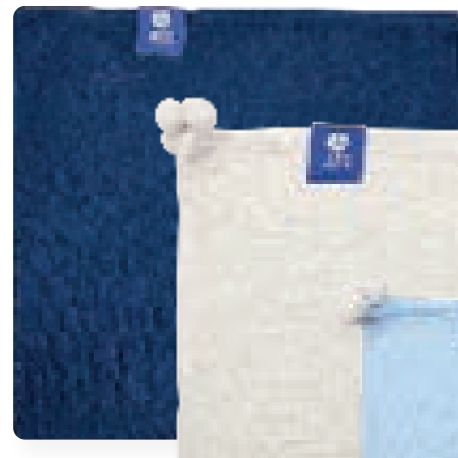
Bath robes

6.



Hooded towels

8.



9.



10.



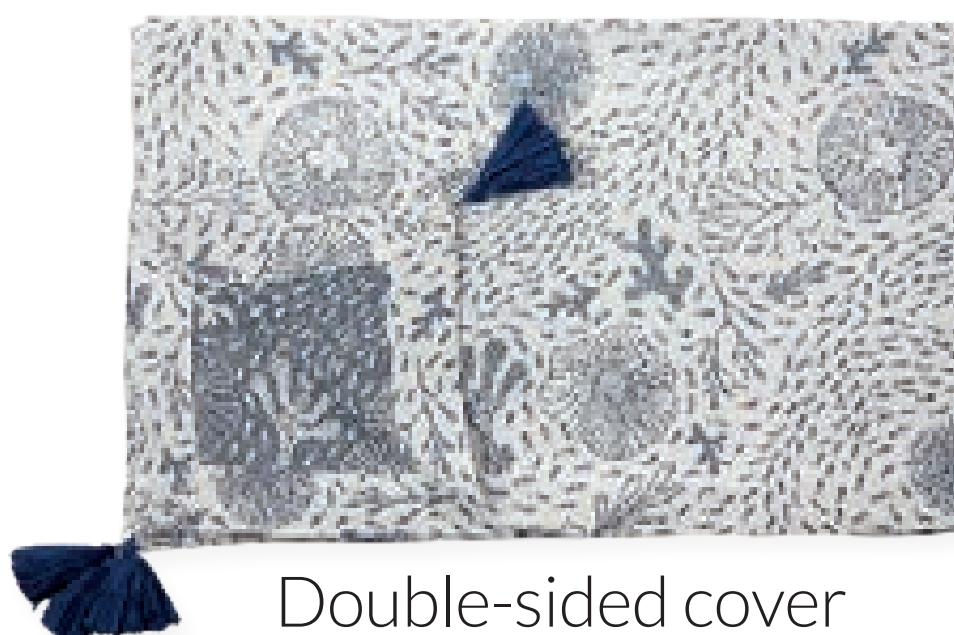
Printed and jacquard classic nappies
75x75cm

13.



Wash glove

18.



Double-sided cover



MUST HAVE
from 0 to 18 months

2 TERRY SIDES
inside - **ALGAE**
outside - **BAMBOO**



Algal soothing
of irritated skin

15 cm



15 cm

*An opening ensuring safe drying
of the baby after the bath
allows to hang the bath robe
around the parents neck*



1. Save the Ocean
print



2. 3D texture



3. Grain texture



ALGAE AND BAMBOO COLLECTION

Baby layette

BATH ROBE

The first towel to dry your baby after a bath.

Baths are real rituals. As a parent, you want to focus on the emotions of your tiny tot, at the same time being sure that the products helping you take care of your child are of the highest quality.

A handy shape, a unique design and a health-promoting fabric make the bath robe from the ALGAE-BAMBOO collection an indispensable element in every layette.

The bath robe was designed so that the **beneficial SeaCELL® algae fibre**, forming the loops, directly covers the baby's sensitive skin. This is why the robe has an algae inside and a bamboo outside.

The algae collection offers **as many as three robes** in regular sale.

ALGAE AND BAMBOO COLLECTION

Robe dimensions: 85 × 85cm
Model 1: Save the Ocean PRINT in the hood
Model 2: 3D fabric in the hood
Model 3: Grain in the hood

Terry composition: 55% SeaCELL algae fibre
45% bamboo viscose
Packaging: bulk plastic wrap, tape, and label
Ornamentation: a tassel

bamboo line



PLEASANT

UNTIL THE

• 5th •

— year of age —

BATHS



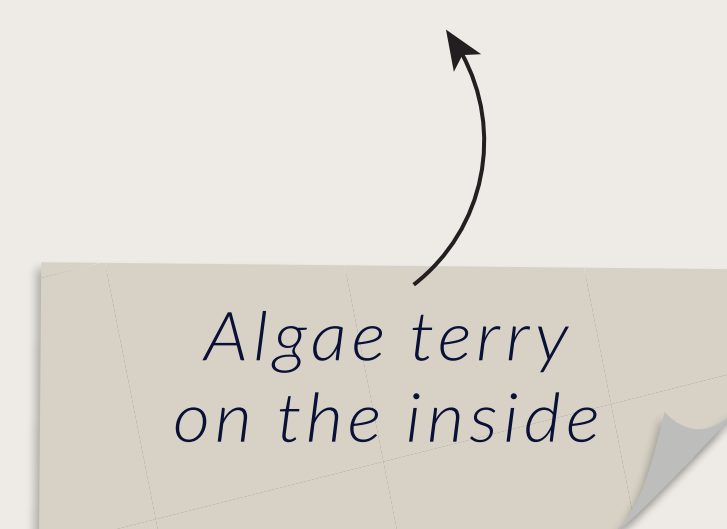
4. Save the Ocean print



5. 3D texture



6. Grain texture



ALGAE AND BAMBOO COLLECTION

Baby layette

HOODED TOWEL

It will accompany your baby during the most pleasant ritual of the day, which is a bath.

Its size was selected so that the towel can be used until the fifth year of age or even longer.

Out of concern for health, the towel is made of algae and bamboo terry, which is **particularly absorbent and nice to the touch**, does not irritate the baby's sensitive skin, and, most importantly, enriches the baby's skin with beneficial minerals from algae. As the algae terry is used on the inside of the towel, minerals from algae come in direct contact with the skin.

“Ever since she started using a hooded bamboo towel, my five-year-old daughter has refused to use traditional towels. The gentleness of bamboo towels cannot be overestimated when it comes to contact with the baby's sensitive skin.”

Mother of five-year-old Jagoda

ALGAE AND BAMBOO COLLECTION

Towel dimensions: 140 × 70 cm

Model 4: Save the Ocean PRINT in the hood

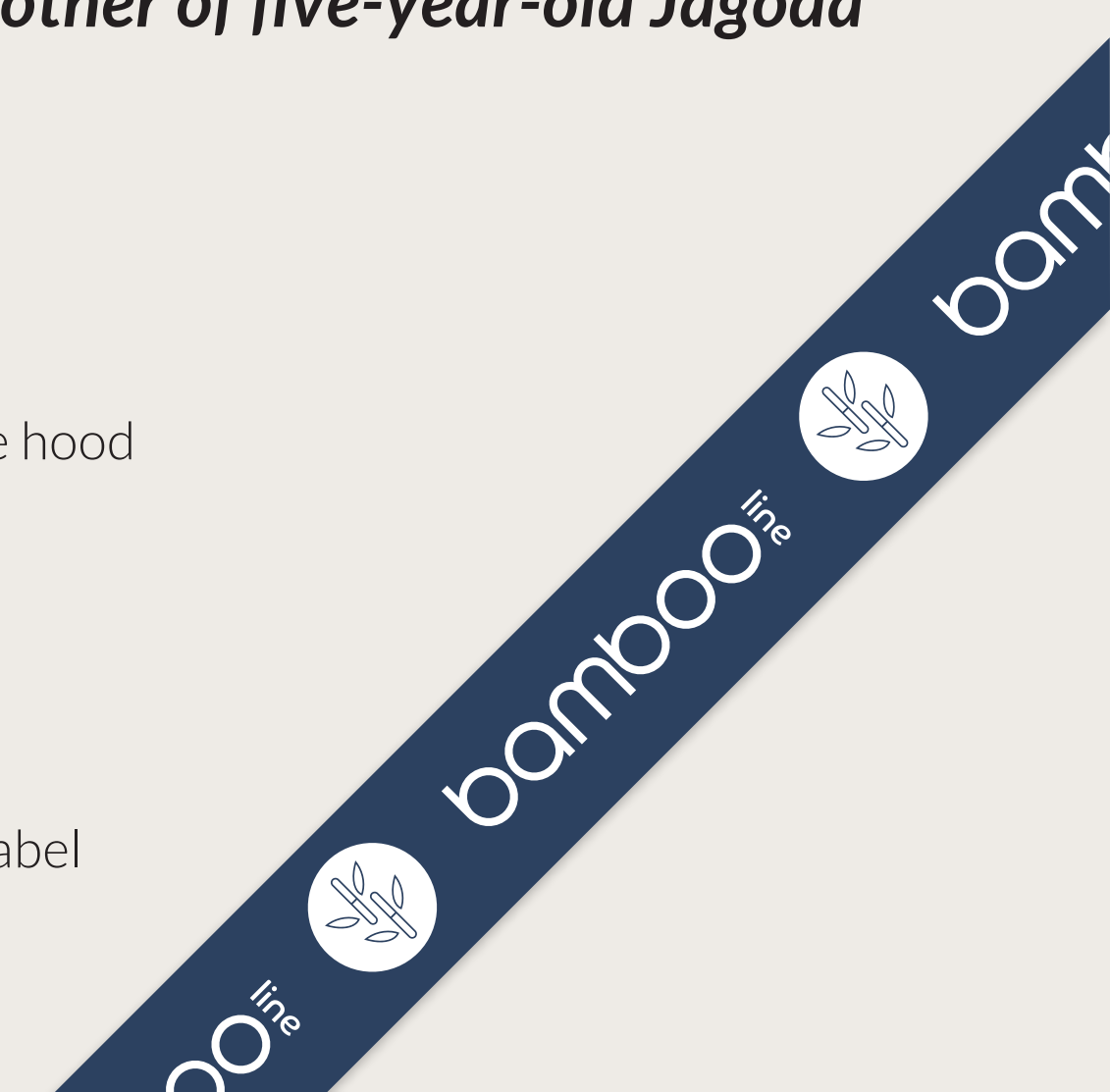
Model 5: 3D fabric in the hood

Model 6: Grain fabric in the hood

Terry composition: 55% SeaCELL algae fibre
45% bamboo viscose

Packaging: bulk plastic wrap, tape, and label

Ornamentation: a tassel



ALGAE AND BAMBOO COLLECTION

Baby layette

CLASSIC NAPPIES

Nappies are the essential elements in the layette all parents take to the hospital.

The ALGAE AND BAMBOO COLLECTION offers them **in 3 sizes**. They can have the form of **classic nappies**, **reusable wipes**, also called 'burp cloths' and the largest of them all - **muslin blankets**.

Apart from the composition that is beneficial to the skin, our nappies are distinguished by a unique jacquard pattern depicting a school of fish. This is how you will recognise nappies with algae.

ALGAE AND BAMBOO COLLECTION

Nappy dimensions: 75 × 75 cm

Colours: Save the Ocean PRINT, sky blue, navy blue, natural, white

Composition: 40% SeaCELL algae fibre
60% bamboo viscose

Packaging: bulk plastic wrap, tape, and label

Ornamentation: 4 balls

7.



A set of
2 nappies

8.



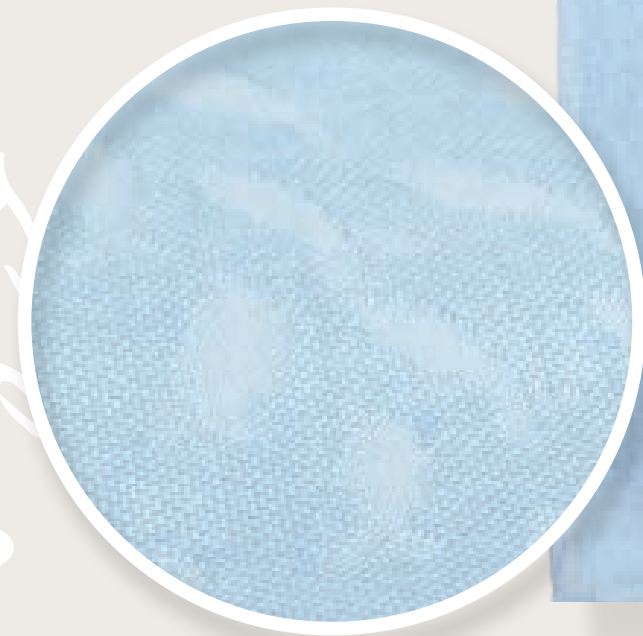
9.



A single nappy

10.

A school
of fish pattern



exclusive
JACQUARD
motif

SAVE THE OCEAN

bamboo
line
TEXPOL

bamboo
line
bamboo
line
bamboo
line



a beach pareo
for **the mum**

2 functions

a summer blanket
for **the baby**

11.

Focus on details



a navy blue tassel
adds some charm!



an intensive pattern
with an eco-friendly message



ALGAE AND BAMBOO COLLECTION

Baby layette

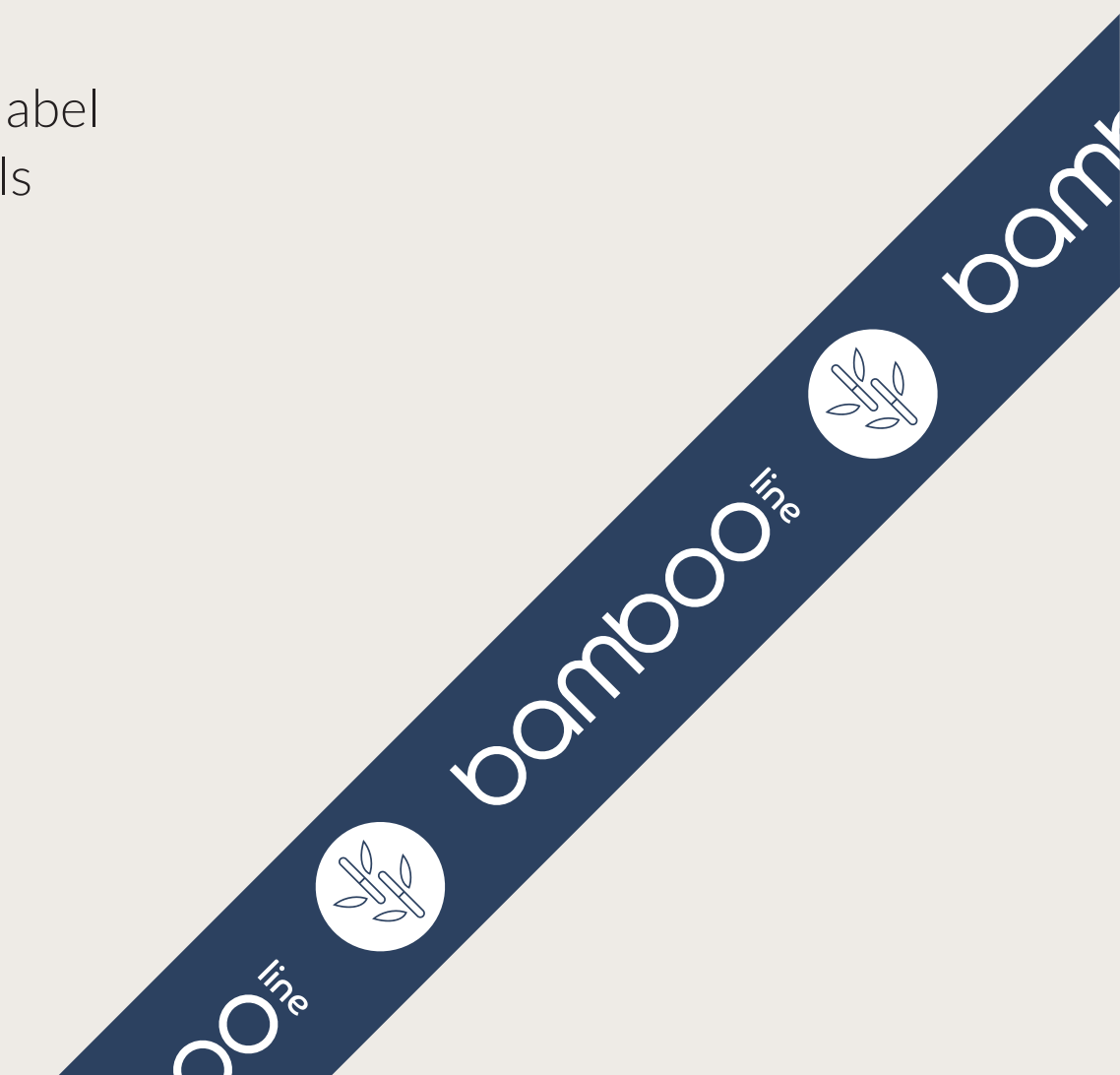
MUSLIN BLANKET AND A PAREO FOR THE MUM

The first blanket to serve two purposes.

Traditionally, a muslin blanket is called a light blanket or a mist and is perfect as a summer cover. However, our muslin blanket serves an additional purpose: it can be used as a PAREO for the mum!

ALGAE AND BAMBOO COLLECTION

Wrap dimensions: 150 × 100 cm
Colours: Save the Ocean PRINT
Composition: 40% SeaCELL algae fibre
60% bamboo viscose
Packaging: bulk plastic wrap, tape, and label
Ornamentation: 4 handmade navy blue tassels





Essential in the baby
daily care

12.

a wooden
ring

GENTLY!
wash the baby's face

A MIX
of 3 colours

AN ECO-FRIENDLY
alternative to
disposable
WET WIPES

ALGAE AND BAMBOO COLLECTION

Baby layette

SET OF A 3 REUSABLE CARE WIPES

Care wipes are the smallest nappies in our portfolio, measuring 25x30cm.

They can be used as bibs or reusable cloths to clean the baby's mouth during feeding or or to wipe it with water. Care wipes offer an **eco-friendly alternative to disposable wet wipes**. Thanks to their perfect composition, they are gentle and have a beneficial effect on the skin.



Perfect for every mum's care rituals



ALGAE AND BAMBOO COLLECTION

Bandana dimension: 25× 30 cm
Composition: 40% SeaCELL algae fibre
60% bamboo viscose
Packaging: bulk plastic wrap, tape, and label

NOTE! The product is not a toy!



13.

A PRODUCT FOR
younger
and OLDER
family members



algae terry

a thumb
cut-out



A BATH

- Pleasant to the baby
- Effective and safe washing
of a delicate body

• gentle bath
rituals

• caring massage of the
whole body

ALGAE AND BAMBOO COLLECTION

Baby layette

WASH GLOVE

The first bath of a newborn baby is a stressful experience, which is why it is good to be well-prepared and have all necessary accessories at hand.

Algae wash glove is one of the most useful elements of a layette, which will come in handy during a bath ritual. Thanks to naturally soft terry loops, it gently massages the baby's skin, cleans it effectively and enriches it with minerals from algae.



ALGAE AND BAMBOO COLLECTION

Wash glove dimensions: 13 × 22 cm
Terry composition: 55% SeaCELL algae fibre
45% bamboo viscose
Packaging: bulk plastic wrap, tape, and label



SAVE THE OCEAN



bamboo



bamboo

2
variants

Charming bibs in the shape of sharks
offer an opportunity to tell stories

14.



15.



When EATING on their own

Turn each meal
into a fun experience!



ALGAE AND BAMBOO COLLECTION

Baby layette

BIB - Little Shark

You create joyful rituals with your children from their earliest years.

Learning to eat is one of the moments that can be made very enjoyable for the child. In order to ensure that the child likes eating and that clothes are protected against colourful soups, we have created two Little Shark bibs.

They combine two types of fabric: bamboo terry and algae nappy fabric, and their shape is a reference to the ocean theme of the whole collection.

ALGAE AND BAMBOO COLLECTION

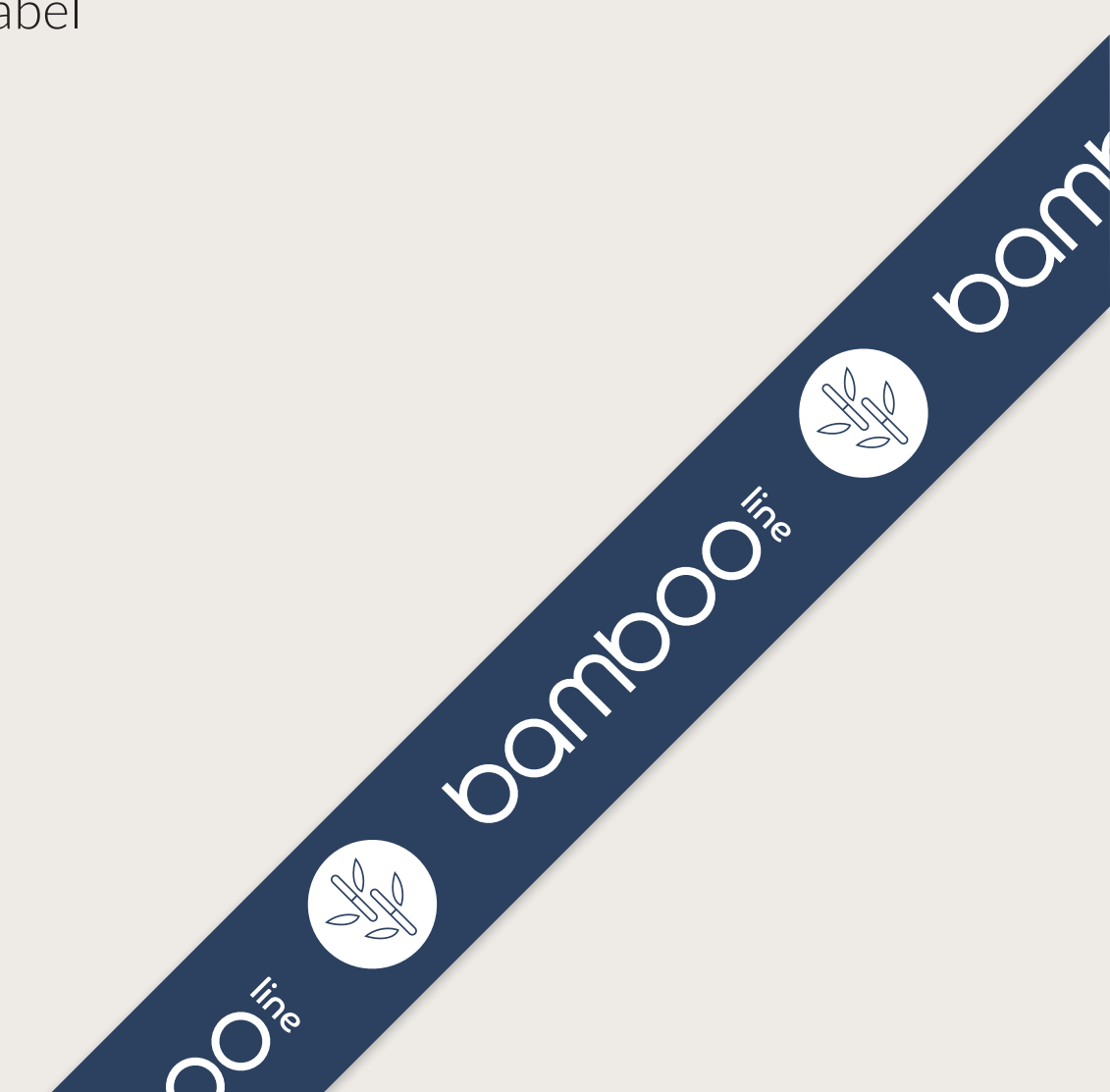
Product dimensions: 20 × 30 cm

Model 14: Save the Ocean PRINT

Model 15: sky blue

Terry composition: 100% bamboo viscose, loop construction

Packaging: bulk plastic wrap, tape, and label



ALGAE AND BAMBOO COLLECTION

Baby layette

BLANKETS

For the first time, we present to you blankets and covers in natural yarn colours, with a perfect composition and unique thick 3D texture.

Blankets are perfect for any season as delicate covers. Their natural colour is a reference to minimalist design trends. Decorative stitches and handmade tassels make them more elegant.

focus on trendy details



16. A Grain blanket



elegant finish



17. A 3D blanket



16. A Grain blanket - Grain texture



17. 3D blanket - 3D texture

ALGAE AND BAMBOO COLLECTION

Product dimensions: 100 × 80 cm

Model 16: Grain

Composition: 14% SeaCELL algae fibre
83% bamboo viscose
3% polyamide

Model 17: 3D

Composition: 23% SeaCELL algae fibre
77% bamboo viscose

Packaging: bulk plastic wrap, tape, and label

SAVE THE OCEAN



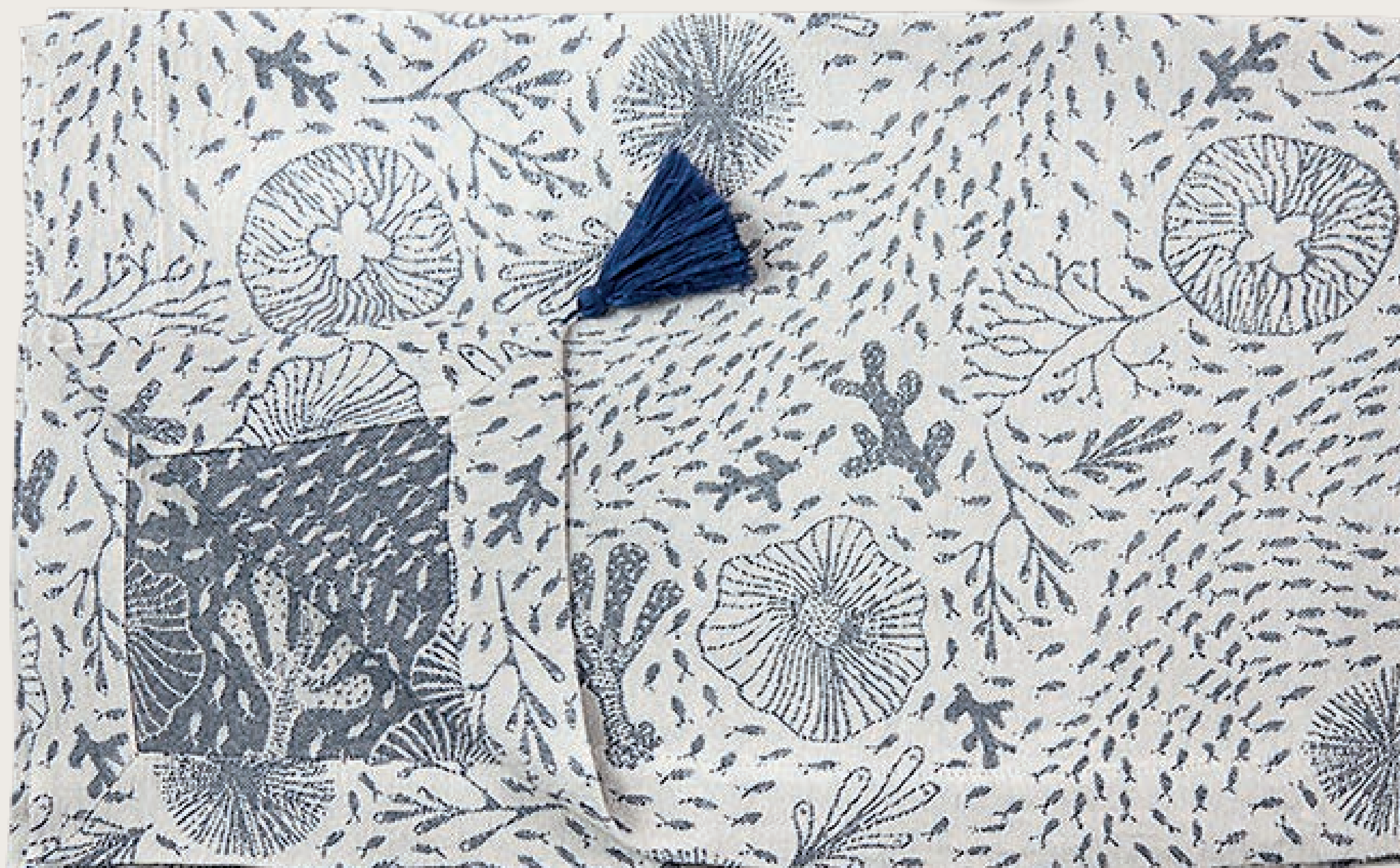
collection STAR

18.

Focus on details



Elegant decorative stitches



FAUNA and FLORA
as seen during the day and night



SAVE THE OCEAN



ALGAE AND BAMBOO COLLECTION

Baby layette

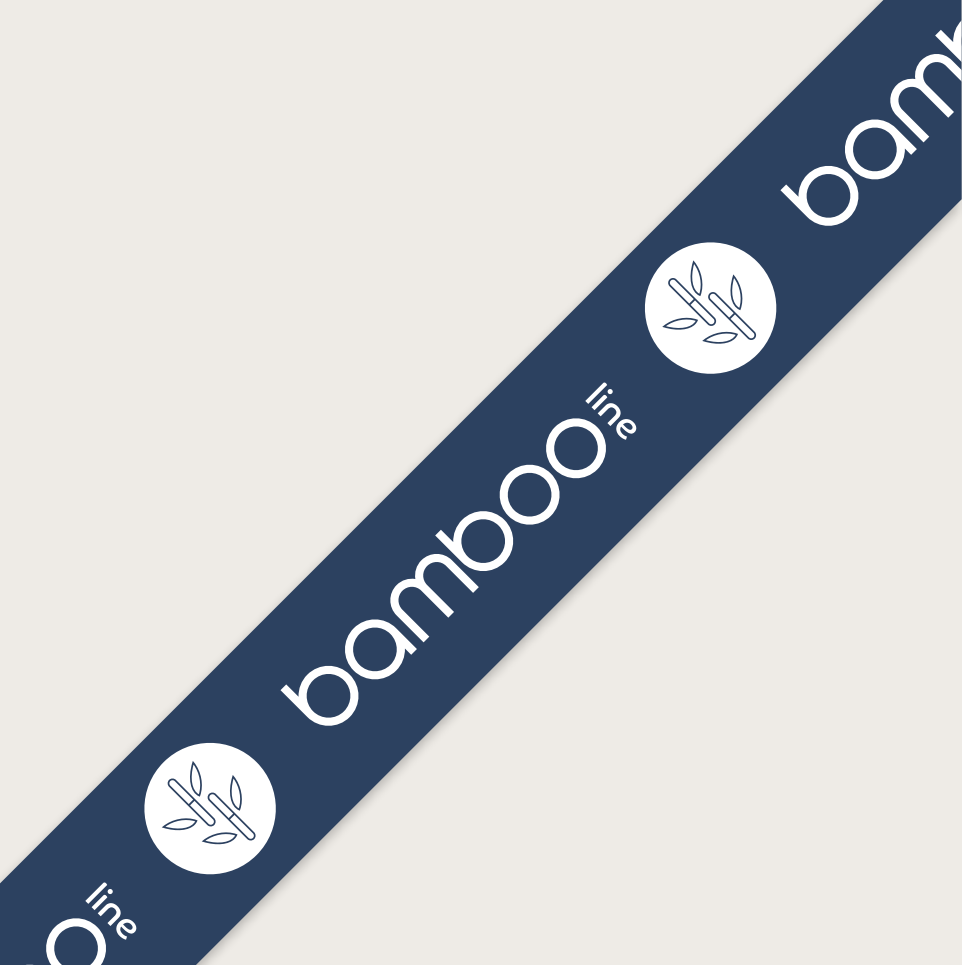
Double-sided *Save The Ocean* COVER

An algae and bamboo cover with an exclusive jacquard motif of ocean fauna and flora - **the first cover with an eco-friendly message** that is to remind us all that taking care of the environment is our common duty.

The cover is made of a two-colour fabric, in dark navy blue and natural yarn, with a decorative finish in the form of a wide band and fashionable navy blue tassels. Thanks to an original method of combining fibres, the cover has day and night sides.

ALGAE AND BAMBOO COLLECTION

Cover dimensions: 120 × 80 cm
Composition: 17% SeaCELL algae fibre
83% bamboo viscose
Packaging: bulk plastic wrap, tape, and label
Ornamentation: 4 handmade navy blue tassels






bamboo
line

SAVE THE OCEAN

Code	Symbol	Product
25505	1.	Bath Robe Print , a tassel, <i>SAVE THE OCEAN</i>
25537	2.	Bath Robe 3D fabric , a tassel, <i>SAVE THE OCEAN</i>
25506	3.	Bath Robe Grain , a tassel, <i>SAVE THE OCEAN</i>
25507	4.	Hooded Towel Print , a tassel, <i>SAVE THE OCEAN</i>
25538	5.	Hooded Towel 3D fabric , a tassel, <i>SAVE THE OCEAN</i>
25508	6.	Hooded Towel Grain , a tassel, <i>SAVE THE OCEAN</i>
25513	7.	Set of 2 Nappies Print and white , <i>SAVE THE OCEAN</i>
25518	8.	Navy Blue Nappy , <i>SAVE THE OCEAN</i>
25510	9.	Natural Nappy with Balls , <i>SAVE THE OCEAN</i>
25514	10.	Sky Blue Nappy with Balls , <i>SAVE THE OCEAN</i>
25515	11.	Muslin Blanket Print , tassels, <i>SAVE THE OCEAN</i>
25521	12.	Set of 3 Reusable Care Wipes , a mix of colours, <i>SAVE THE OCEAN</i>
25522	13.	Wash Glove , <i>SAVE THE OCEAN</i>
25523	14.	Little Shark Bib Print , <i>SAVE THE OCEAN</i>
25524	15.	Little Shark Bib Sky Blue , <i>SAVE THE OCEAN</i>
25541	16.	Grain Blanket , tassels, <i>SAVE THE OCEAN</i>
25540	17.	3D Blanket , tassels, <i>SAVE THE OCEAN</i>
25539	18.	Double-Sided Save The Ocean Cover , tassels, <i>SAVE THE OCEAN</i>



BUYING OUR PRODUCTS

YOU SUPPORT LOCAL BUSINESSES

and

**PROTECT JOBS FOR PEOPLE
WITH DISABILITIES**

WWW.BAMBOO-LINE.PL WWW.TEXPOL.NET.PL

Producer: Z.P.Chr. TEXPOL Sp. z o. o.
95-081 Dłutów, ul. Polna 4
Manufactured: Borkowice 26
tel: (44) 634 - 05 - 78
NIP 7691007154

www.facebook.com/BAMBOOlineByTexpol
www.facebook.com/TEXPOL
www.texpol.net.pl
www.bamboo-line.pl